

FOR LEASE

CDNGLOBAL[®]



2725 QUEENSVIEW DRIVE | OTTAWA, ON
SUITE 501 – LOWER LEVEL

LEASE DETAILS

SIZE AVAILABLE Approx. 1,200 sq.ft.

GROSS RENTAL RATE \$2,900.00 per month plus HST

ADDITIONAL RENT & UTILITIES Included in Gross Rent (Phone and Internet extra)

PARKING Three (3) parking spots

AVAILABILITY Immediate

TERM Five (5) years



PROPERTY DETAILS

The Chambers is a professional, beautifully maintained brick building constructed in 2006, located just off Greenbank Rd/Pinecrest in Queensview Terrace North. With parking directly in front of the end cap unit, and a private secure entryway, this building is fixtured with beautiful accent lighting and new carpets.

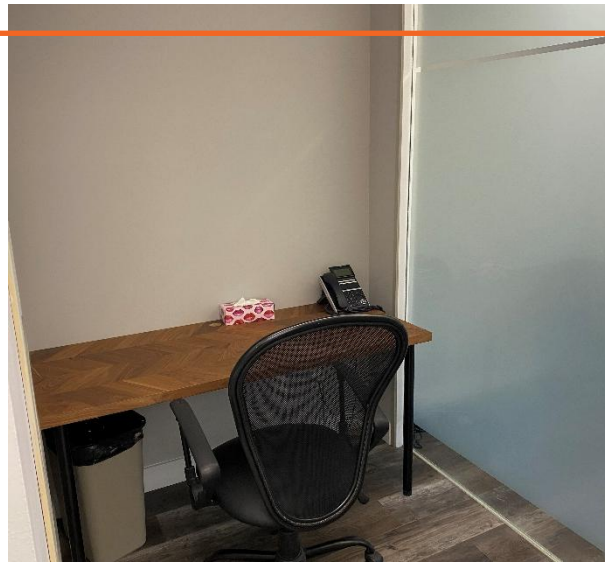
The elegantly decorated lower-level space is approximately 1,200 sq.ft. with wooden flooring and a large boardroom/common workspace or eating area with a kitchenette. The kitchenette features two large side-by-side-mini fridges, a dishwasher, plenty of cupboard space and a beautiful 2-pc bathroom. The rest of the space is separated into 6 private workstations enclosed with stylish, contemporary, sliding barn doors and a central common workspace.

DEMOGRAPHICS

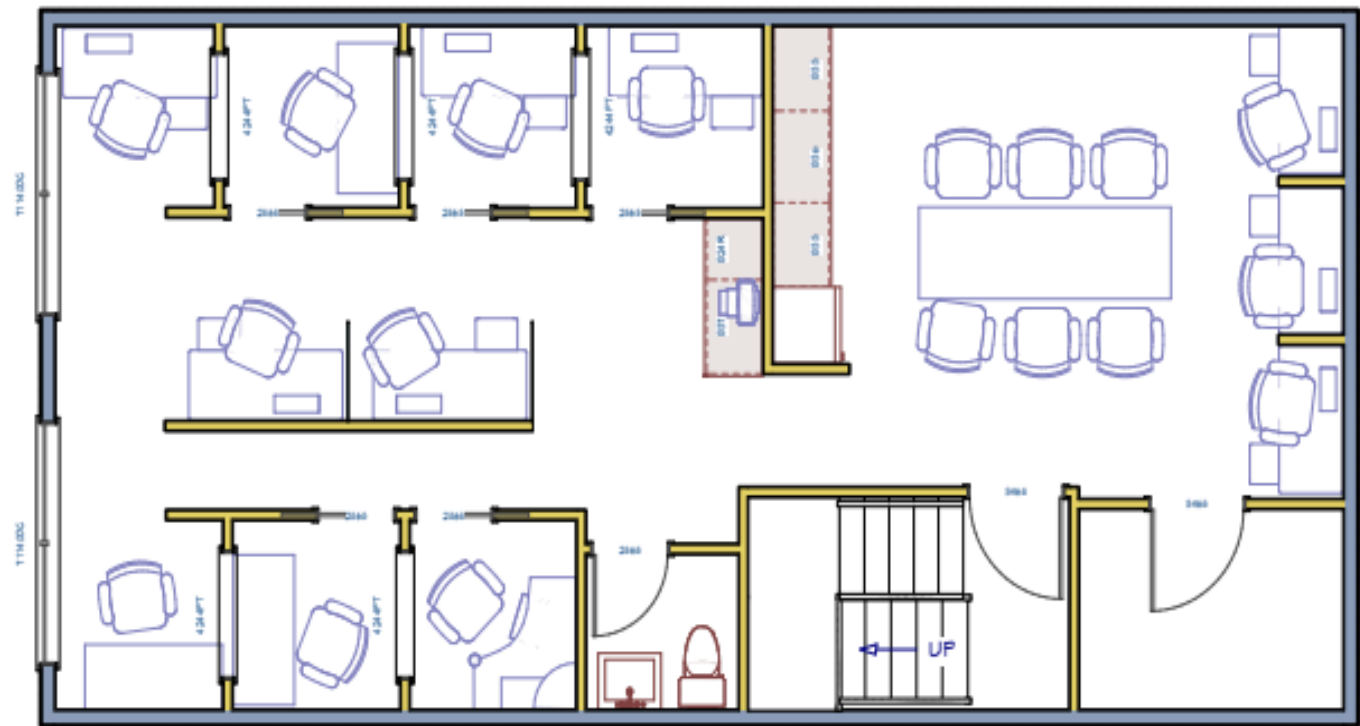
Radius	2 KM	5 KM	10 KM
Population (2023)	45,986	147,417	477,361
Population (2028)	50,820	164,209	533,527
Population (2033)	55,318	179,559	583,380
Projected Annual Growth 2023-2033	2.0%	2.2%	2.2%
Median Age	38.3	41.1	39.8
Average Household Income	\$89,382	\$108,209	\$113,996



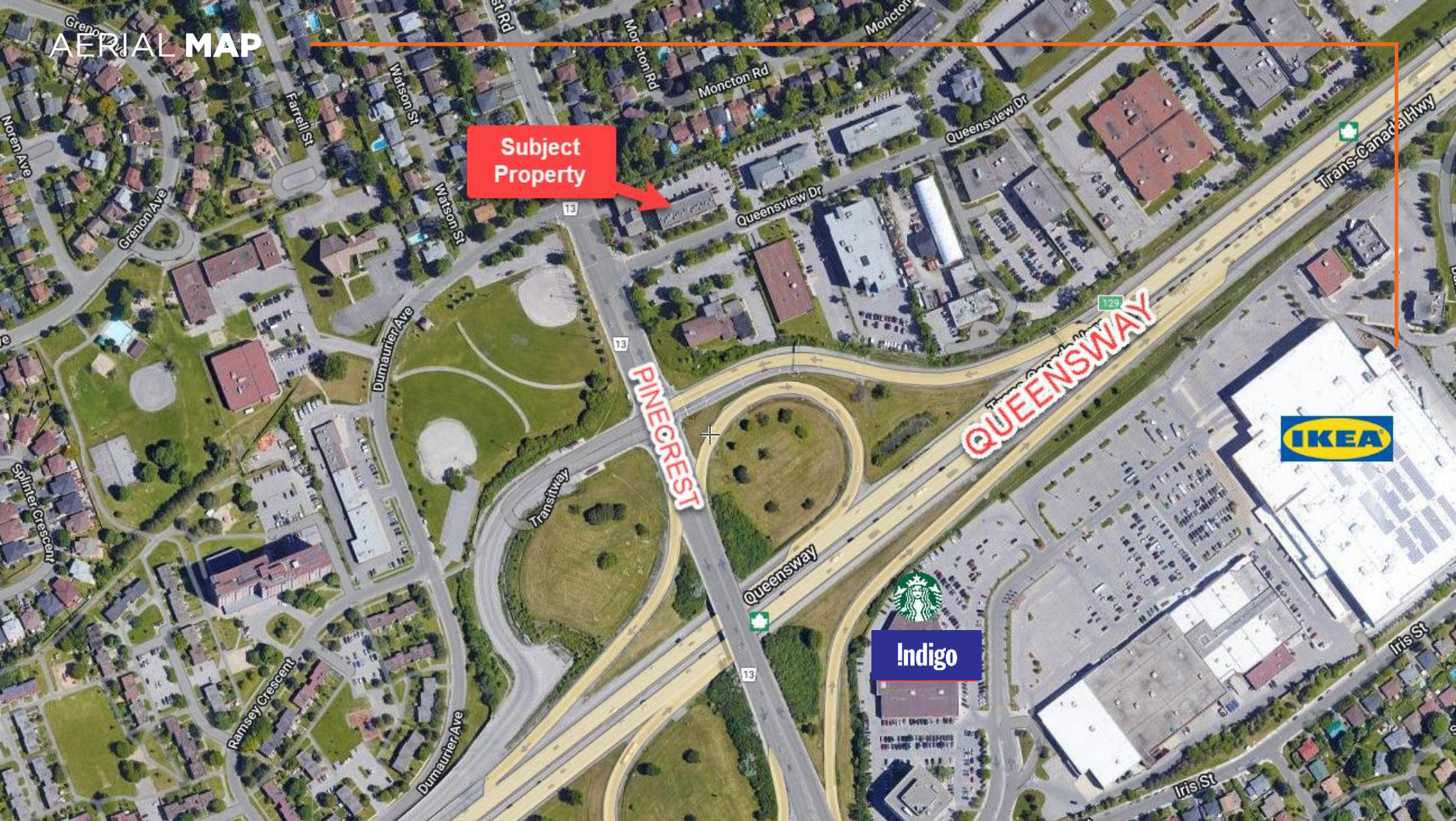
SUITE PHOTOS



FLOOR PLAN



AERIAL MAP



CDNGLOBAL®

CDNGLOBAL.COM
CDN Global (Ottawa) Ltd.
1419 Carling Avenue, #103
Ottawa, ON K1Z 7L6

PHILIP ZUNDER
President / Broker of Record



613.725.7170



pzunder@cdnglobal.com

BEN ZUNDER
Sales Representative



613.913.8858



bzunder@cdnglobal.com

ERIKA JOHNSON
Sales Representative



514.237.1612



ejohnson@cdnglobal.com

This communication is intended for general information only and not to be relied upon in any way. Consequently, no responsibility or liability whatsoever can be accepted by CDNGLOBAL for any loss or damage resulting from any use of, reliance on or reference to the contents of this document, including hypertext links to external sources. In addition, as a general communication, this material does not necessarily represent the view of CDNGLOBAL in relation to particular properties or projects. This communication is not intended to cause or induce breach of any agency agreement. Reproduction or distribution of this communication in whole or in part is not allowed without prior written approval of CDNGLOBAL.