

POUR SOUS-LOCATION / FOR SUBLEASE

1751

RUE RICHARDSON

CDNGLOBAL[®]

DÉTAILS SUR LA PROPRIÉTÉ

Property Details

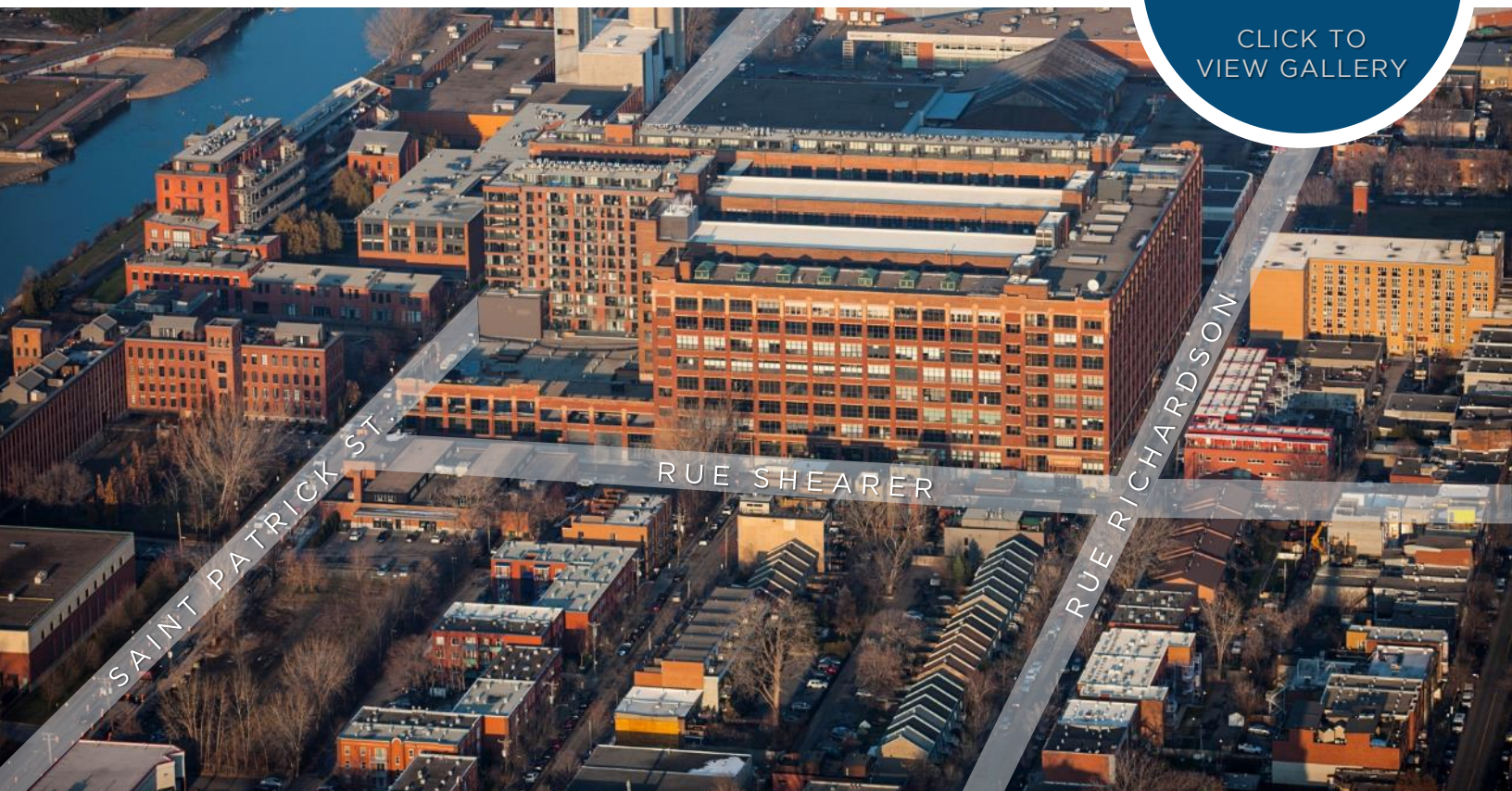
NOM DE L'IMMEUBLE / BUILDING NAME	LE NORDELEC / THE NORDELEC
ESPACES À SOUS-LOUER / UNITS FOR SUBLEASE	2.300, 3.300 ET / AND 4.300
SUPERFICIE DISPONIBLE / AVAILABLE AREA	JUSQU'À 54,870 PI.CA. / UP TO 54,870 SQ.FT.
ÉCHÉANCE DU BAIL / LEASE EXPIRY	30 JUIN 2033 / JUNE 30, 2033
LOYER DEMANDÉ / ASKING RENT	NÉGOCIABLE / NEGOTIABLE
FRAIS D'EXPLOITATION / OPERATING EXPENSES	\$15.20 PI.CA. / SQ.FT. (EST. 2021)
DISPONIBILITÉ / AVAILABILITY	IMMÉDIAT / IMMEDIATE
POSTES DE TRAVAILS/ WORKSTATIONS	133 2 ^E , 138 3 ^E , 132 4 ^E / 133 2ND FLOOR, 138 3RD FLOOR, 132 4TH FLOOR

COMMENTAIRES / COMMENTS

- ESPACE DE BUREAU STYLE LOFT «PLUG & PLAY» / PLUG & PLAY LOFT SPACE
- MEUBLES DE HAUTE QUALITÉ TEKNION DISPONIBLES / HIGH QUALITY TEKNION FURNITURE AVAILABLE
- SITUÉ À L'INTERSECTION DES QUARTIERS GRIFFINTOWN ET POINTE-SAINT-CHARLES, PRÈS DU CANAL LACHINE / LOCATED AT THE INTERSECTION OF GRIFFINTOWN AND POINTE-SAINT-CHARLES, STEPS FROM THE LACHINE CANAL
- TRANSPORT EN COMMUN - AUTOBUS / PUBLIC TRANSIT - BUS
107 VIA METRO CHARLEVOIX 57 VIA METRO LUCIEN-L'ALLIER

CLIQUEZ POUR
VOIR LA GALERIE
DE PHOTOS

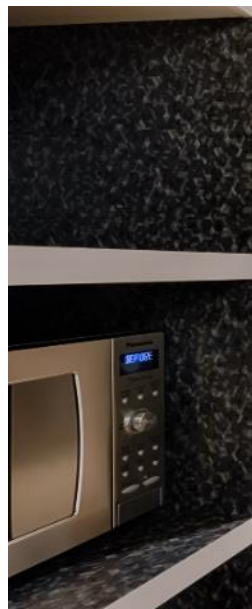
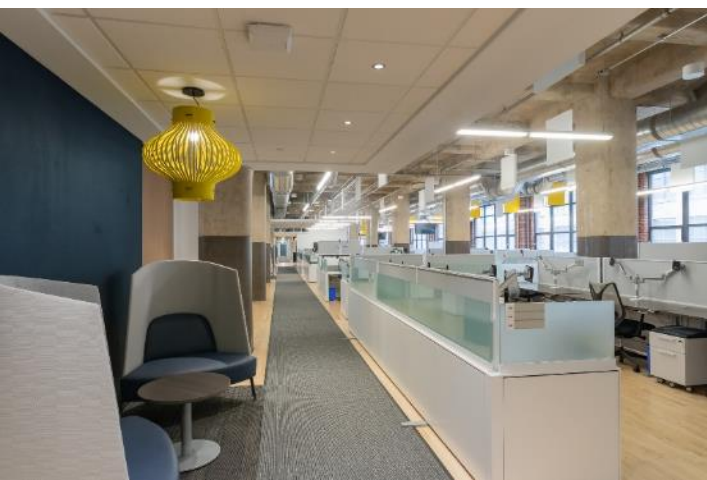
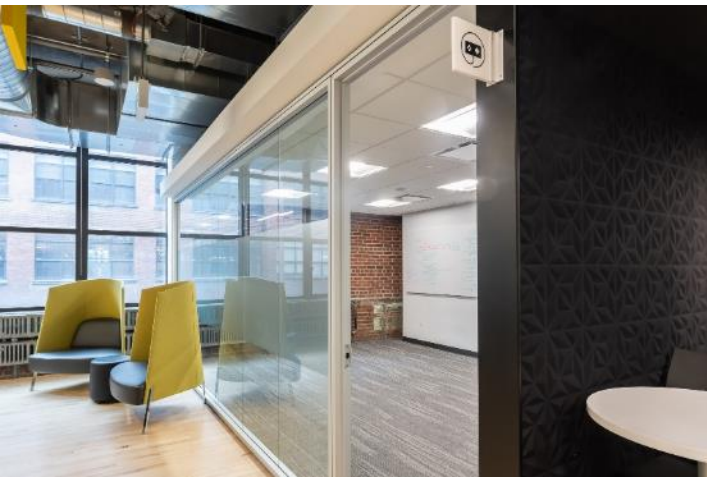
CLICK TO
VIEW GALLERY





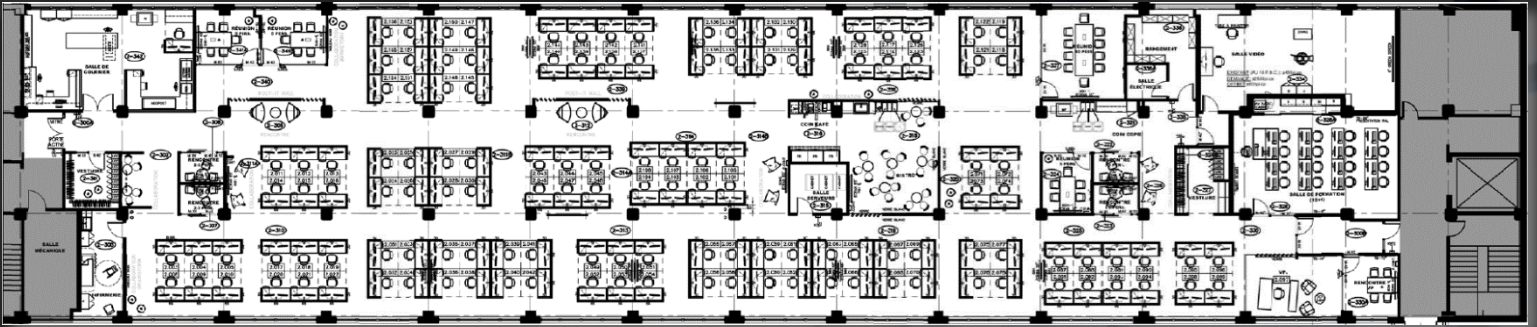
INTÉRIEUR

Interior



Plan - 2e

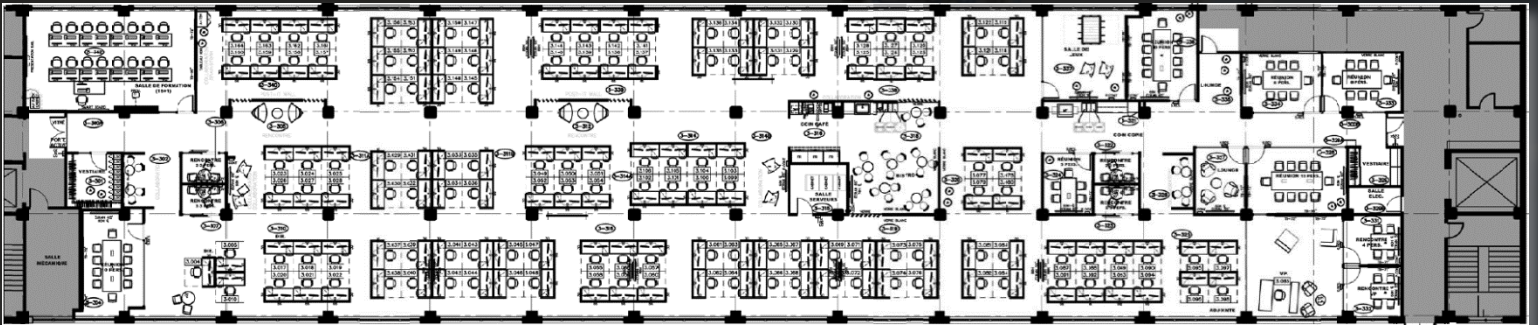
Plan - 2nd floor



18,290 ca / SF

Plan - 3e

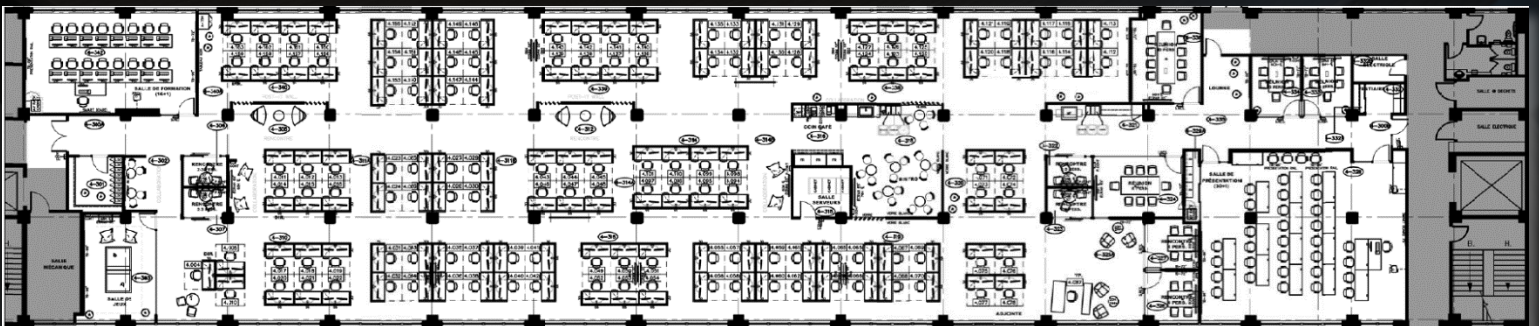
Plan - 3rd floor



18,290 ca / SF

Plan - 4e

Plan - 4th floor



18,290 ca / SF

Luciano D'Iorio
Courtier immobilier agréé
Certified Real Estate Broker
514.567.2969
ldiorio@cdnglobal.com

CDNGLOBAL[®]

WWW.CDNGLOBAL.COM

