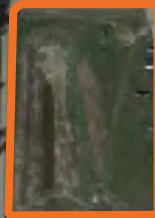


FOR SALE

4 Acres Available in
Wheatland County

TRANS CANADA

Range Road 263



DRIVING TIMES



- Calgary City Limits: 28 mins
- Calgary City Centre: 48 mins
- YYC International Airport: 37 mins
- Chestermere: 18 mins
- Strathmore: 11 mins

241059 Range Road 263

Wheatland County, Alberta

Leading Agent
Jason Natale
Senior Associate
403-402-3129
jnatale@cdnglobal.com

CDNGLOBAL[®]

403.265.9966 | www.cdnglobal.com

PROPERTY DETAILS

ZONING:	Industrial General (I-G)
SIZE:	4 Acres
SALE PRICE:	\$450,000.00
PRICE PER ACRE:	\$112,250.00
PLAN:	1410597
BLOCK:	5
LOT:	1

- Located within the West HWY 1 ASP of Wheatland County, just south of Trans Canada HWY 1 at RR 26

SITE PLAN



Discretionary	Permitted
Agricultural Processing Major	Accessory Building/Structure
Auction Mart	Agricultural Operation
Auto and Equipment Services	Agricultural Processing - Minor
Composing Facility	Agricultural Support Services
Dwelling, Employee	Cannabis Production Facilities
Industrial Medium	Commercial Storage
Mechanical Repair Shop	Contractor Service
Signs requiring a Development Permit	Essential Public Service
Tower	Food and Beverage Production
Warehouse Sales	Greenhouse, Public
Work Camp	Industrial Light
	Office
	Outdoor Storage
	Recreational Vehicle Storage
	Service Station
	Shipping Container
	Solar Panel, Ground Mount
	Solar Panel, Struction Mount
	Stripping and Grading
	Stockpile
	Veterinary Clinic
	Warehouse Storage
	WECS (Category 1)1
	WECS (micro)

