

Dock Loading Building



FOR SUBLEASE

14515 121A AVENUE, EDMONTON, AB

WARREN COCHLIN | Senior Vice President, Associate
780.701.1932 | wcochlin@cdnglobal.com

CARRIE PASEMKO | Associate
780.701.1930 | cpasemko@cdnglobal.com

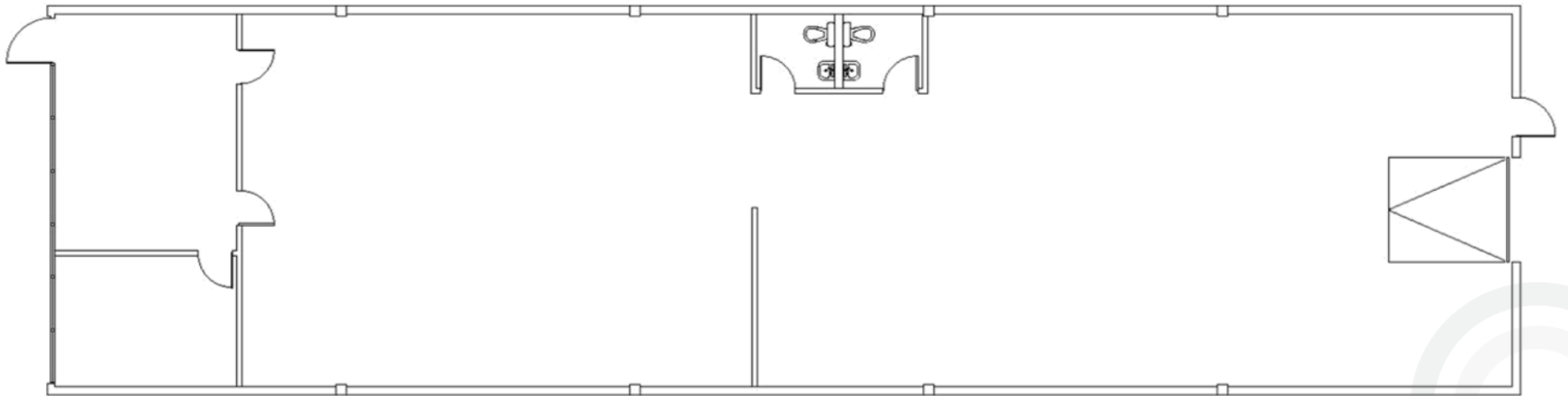
CDNGLOBAL[®]
Commercial Real Estate Advisors

PROPERTY HIGHLIGHTS

- Bright dock loading warehouse bay, with recent upgrades including paint, flooring, and lighting
- Large loading and marshalling area
- Excellent location with easy access to 118 Avenue, 149 Street, Yellowhead Trail
- Well maintained property in Dominion Industrial area
- Potential for 3,290 square feet of fenced and graveled yard storage
- Professionally managed property

PROPERTY DETAILS

PROPERTY LOCATION	14515 121A Avenue, Edmonton, AB
SIZE	3,283 SF
LOADING	One (1) 8' x 10' Dock
ZONING	IM - Medium Industrial
CEILING	14' Clear
AVAILABLE	June 1 st , 2025
TERM	Flexible
SUBLEASE RATE	Starting at \$10.00 per square foot
OPERATING COSTS	\$5.83 per square foot



14515 121A Avenue, Edmonton, AB

INTERIOR PHOTOS



14515 121A Avenue, Edmonton, AB

CONTACT



WARREN COCHLIN | Senior Vice President, Associate
780.701.1932 | wcochlin@cdnglobal.com

CARRIE PASEMKO | Associate
780.701.1930 | cpasemko@cdnglobal.com

This communication is intended for general information only and not to be relied upon in any way. Consequently, no responsibility or liability whatsoever can be accepted by CDNGLOBAL for any loss or damage resulting from any use of, reliance on or reference to the contents of this document, including hypertext links to external sources. In addition, as a general communication, this material does not necessarily represent the view of CDNGLOBAL in relation to particular properties or projects. This communication is not intended to cause or induce breach of any agency agreement. Reproduction or distribution of this communication in whole or in part is not allowed without prior written approval of CDNGLOBAL.